

Valse de Coppelia

Violon I

Extrait de l'acte I

Léo Delibes

(version révisée 2021)

Tempo di valse ♩ = 160

3

p

10

18

A

26

sf

sf

34

B

ff

p

42

ff

8^{va}

49

C

p

3

54

f

p

3

3

3

3

3

3

f

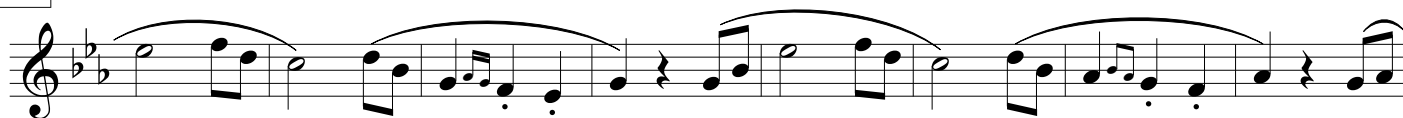
59

rit.

a tempo

Valse de Coppelia
Violon I

D



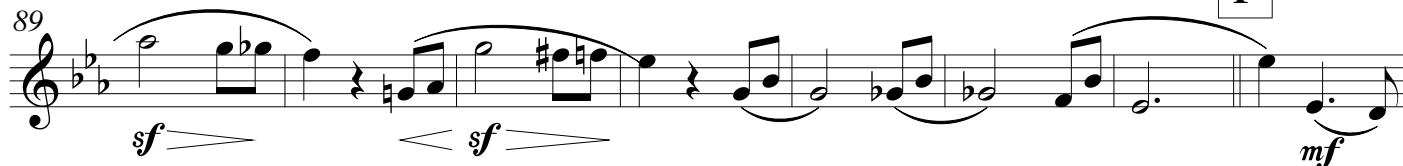
73



E

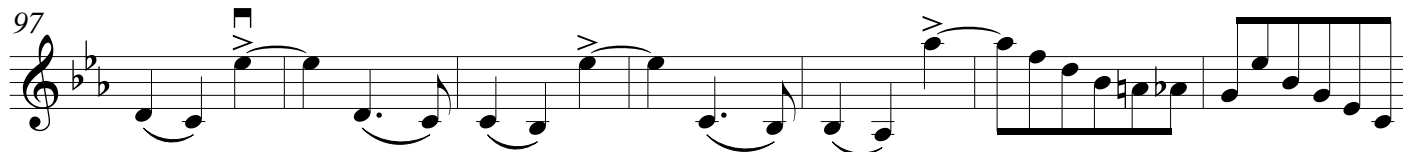


89



F

97



104

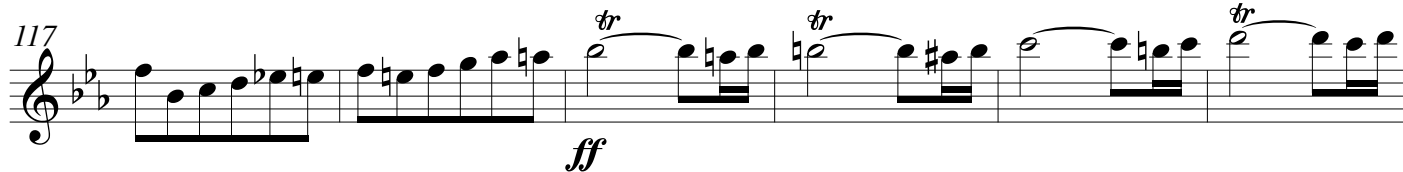


G



accel.

117



H

Alla breve $\text{♩} = 68$

