

MPR
OK

Swan Lake Suite, Op. 20a

Violoncelli

Peter Ilyich Tchaikovsky

№1 Scène

Moderato

1 pizz. 2 1 arco

pizz. p p

cresc. arco f

pizz.

arco V

stringendo

ff

2 Piu mosso

fff

mf

pte

dim. p

Tchaikovsky — Swan Lake Suite, Op. 20a

2

Violoncelli

№ 2 Valse.

INTRADA

Tempo di Valse

pizz.

f

p arco

VALESE

p

pizz.

arco

1

ff

Tchaikovsky — Swan Lake Suite, Op. 20a

4

Violoncelli

p *ff* *ff* *p* *pizz.* *arco* *ff*

4 5 6

Violoncelli

1 *ff*

p

1. *p* 2. pizz. *mf* arco

8

1

1. 2. 1

9 *p*

3 *p*

Tchaikovsky — Swan Lake Suite, Op. 20a

6

Violoncelli

pizz. **10** pizz. 1-15 2 3 4 5 6 7

p

8 9 10 11 12 13 14 15

Detailed description: This block contains two staves of music. The first staff starts with a *pizz.* marking and a box around measure 10. Measures 10-15 are marked with a slash and a vertical line, indicating a repeat or a specific performance instruction. The second staff continues with measures 8-15, also marked with slashes and vertical lines. The dynamic *p* is indicated below the first staff.

1. **11** arco *f*

Detailed description: This block contains one staff of music. It starts with a first ending bracket over measures 11 and 12, followed by a second ending bracket over measures 13 and 14. Measure 11 is boxed and labeled **11**. The marking *arco* and dynamic *f* are present. The staff continues with measures 11-15.

ff

Detailed description: This block contains one staff of music. It shows measures 16, 17, and 18. The dynamic *ff* is indicated below the staff.

1. π \vee **2.** *mf*

Detailed description: This block contains one staff of music. It features a first ending bracket over measures 19 and 20, and a second ending bracket over measures 21 and 22. Measure 21 is boxed and labeled **2.**. The dynamic *mf* is indicated below the staff.

12 pizz. 1-16 2 3 4 5 6

p

Detailed description: This block contains two staves of music. The first staff starts with a box around measure 23 labeled **12**, followed by *pizz.* 1-16. Measures 23-28 are marked with slashes and vertical lines. The dynamic *p* is indicated below the first staff.

7 8 9 10 11 12

Detailed description: This block contains one staff of music. It shows measures 7-12, which correspond to measures 29-34 of the piece. The staff is marked with slashes and vertical lines.

13 14 15 16 **13** *cresc.*

Detailed description: This block contains one staff of music. It shows measures 13-16, which correspond to measures 35-38. Measure 16 is boxed and labeled **13**. The marking *cresc.* is present below the staff.

arco *mf cresc.*

Detailed description: This block contains one staff of music. It shows measures 39-42. The marking *arco* and dynamic *mf cresc.* are present.

Detailed description: This block contains one staff of music. It shows measures 43-46. The staff is marked with slashes and vertical lines.

Detailed description: This block contains one staff of music. It shows measures 47-50, which conclude the piece. The key signature changes to two sharps (D major) at the end.

Violoncelli

This musical score for Violoncelli (Violoncelli) covers measures 14 and 15. The music is written in bass clef with a key signature of two sharps (F# and C#). Measure 14 begins with a forte (*ff*) dynamic and features a series of eighth notes with various articulations, including accents and slurs. Measure 15 continues the melodic line, also marked *ff*, and includes a repeat sign (double bar line with dots) in the middle of the measure. The score concludes with a final double bar line.

№ 3 Danses des cygnes.

Violoncelli

Allegro moderato

pizz.

pp

p

1

3 bol arco *ff*

R.F.R.
OK

Tchaikovsky — Swan Lake Suite, Op. 20a

№ 5 Danse hongroise. Czardas.

(Чардаш)

Violoncelli

Moderato assai

f

1 Allegro moderato

p

pizz. arco

f

arco *f*

mf *p*

2 Vivace

3

Tchaikovsky — Swan Lake Suite, Op. 20a

12

Violoncelli

pizz.
p
arco
mf
cresc.
3
ff
1
1
pizz.
p
arco
ff
ff
ff
4 1-15
2 3 4 5 6
7 8 9 10 11
12 13 14 15

№ 6 Danse Espagnole

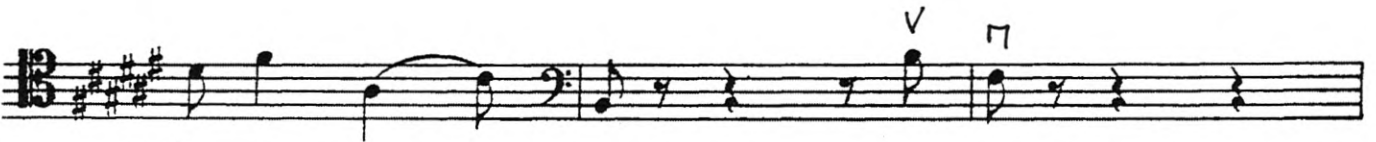
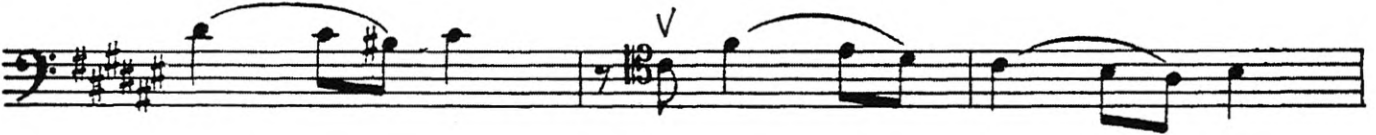
Violoncelli

Allegro non troppo (Tempo di bolero)

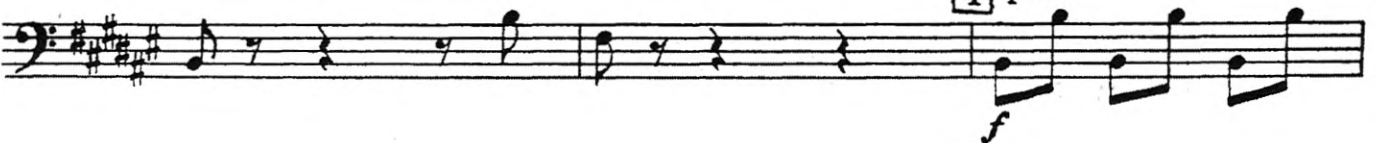
The musical score for Violoncelli of "Danse Espagnole" is written in 3/4 time with a key signature of two sharps (D major). The tempo is marked "Allegro non troppo (Tempo di bolero)". The score consists of 12 staves of music. The first staff begins with a forte (*ff*) dynamic and includes fingering numbers (7, 7, 7, 7, 7, 7, 7, 7, 7, 7, 7, 7) and accents (∩, ∩, ∩, ∩, ∩, ∩, ∩, ∩, ∩, ∩, ∩, ∩). A piano (*p*) dynamic is indicated in a circle. The second staff continues with similar fingering and accents. The third staff features a dynamic marking of *ff* and a *v* (accendo) marking. The fourth staff includes a dynamic marking of *f* and a *v* marking. The fifth staff has a dynamic marking of *mf* and a first ending bracket labeled "1 pizz.". The sixth staff continues with a *mf* dynamic. The seventh staff has a dynamic marking of *mf*. The eighth staff includes a dynamic marking of *mf* and a second ending bracket labeled "2 arco" with fingering numbers (7, 7, 7, 7, 7, 7, 7, 7, 7, 7, 7, 7) and accents (∩, ∩, ∩, ∩, ∩, ∩, ∩, ∩, ∩, ∩, ∩, ∩). The ninth staff has a dynamic marking of *mf*. The tenth staff has a dynamic marking of *mf*. The eleventh staff has a dynamic marking of *mf*. The twelfth staff has a dynamic marking of *mf*.

Violoncelli

3 *Lo stesso tempo*



4 *Più mosso*
pizz.



Violoncelli

Violoncelli musical score for the first section. It consists of three staves in bass clef with a key signature of three sharps (F#, C#, G#) and a common time signature (C). The first staff contains a continuous eighth-note melody. The second staff begins with a rest, followed by a dynamic marking of *ff* and a *arco* instruction. The third staff contains a complex rhythmic accompaniment with various rests and notes.

№ 7 Danse Napolitaine

Violoncelli musical score for the second section, "Danse Napolitaine". It consists of six staves in bass clef with a key signature of three sharps (F#, C#, G#) and a common time signature (C). The first staff is marked *Allegro moderato* and *f*. The second staff is marked *Andantino quasi moderato* and *pizz.* with a first ending bracket. The remaining staves continue the piece with various dynamics, including *p* and *mf*.

Tchaikovsky — Swan Lake Suite, Op. 20a

16

Violoncelli

Molto più mosso

pizz.

First staff of music in bass clef, key of D major. It begins with a piano (*p*) dynamic and a pizzicato (*pizz.*) instruction. The melody consists of eighth notes.

Second staff of music in bass clef, key of D major. It continues the melody with a *poco più f* dynamic marking.

2 Presto

arco

Third staff of music in bass clef, key of D major. It begins with a fortissimo (*ff*) dynamic and an arco instruction. The tempo is marked **2** Presto.

Fourth staff of music in bass clef, key of D major. It continues the melody with a fortissimo (*ff*) dynamic.

Fifth staff of music in bass clef, key of D major. It features a melodic line with slurs and a fermata over the final measure.

Sixth staff of music in bass clef, key of D major. It begins with a piano (*p*) dynamic.

Seventh staff of music in bass clef, key of D major. It begins with a piano (*p*) dynamic and includes a *cresc.* (crescendo) marking.

Eighth staff of music in bass clef, key of D major. It begins with a fortissimo (*ff*) dynamic and includes a **3** marking.

Ninth staff of music in bass clef, key of D major. It continues the melody with a fortissimo (*ff*) dynamic.

Tenth staff of music in bass clef, key of D major. It features a melodic line with slurs and a fermata over the final measure.

Eleventh staff of music in bass clef, key of D major. It begins with a piano (*p*) dynamic and includes a *V* (ritardando) marking.

Violoncelli

p *cresc.*

ff

4

V

V

V

V

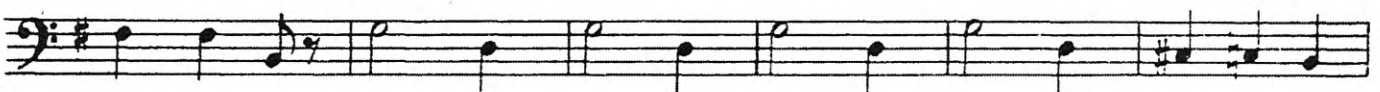
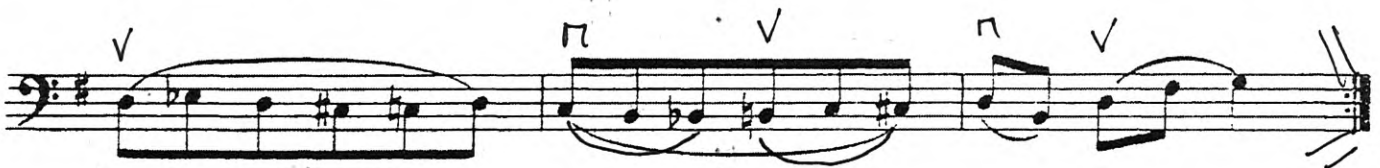
№ 8 Mazurka

Violoncelli

Tempo di mazurka

ff *ff* *ff* *pizz.* *p* *arco* *pizz.* *1. arco* *2.* *3. arco* *ff* *4. pizz.* *p* *sempre pizz.* *p* *5.* *p*

Violoncelli



Violoncelli

pizz. *p* *arco* *ff*

pizz. *p* *arco* *ff* 10

11 *ff*

12 *arco* *Viola* *Più mosso*