

Peter Ilyich Tchaikovsky
Swan Lake Suite, Op. 20a

Contrabassi

№1 Scene.

Moderato

1 pizz. 2 3

p

1 arco *f* pizz.

cresc.

arco *ff*

stringendo 2 Più mosso *ff*

3 3

fff

4 *mf*

dim. *p*

№2 Valse.

Contrabassi

INTRADA

Tempo di Valse

pizz. *f*

p arco

Valse *p*

pizz.

arco

Contrabassi

The musical score for Contrabassi is written in bass clef with a key signature of two sharps (D major). It consists of ten staves of music. The first staff begins with a first ending bracket labeled '1' and a dynamic marking of *ff*. The second and third staves continue the melodic line. The fourth staff has a first ending bracket labeled '1' and a dynamic marking of *ff*. The fifth and sixth staves continue the melody. The seventh staff features a first ending bracket labeled '2' and a measure count of '8'. The eighth and ninth staves contain a more complex melodic passage with a dynamic marking of *mf*. The tenth staff begins with a first ending bracket labeled '3' and a dynamic marking of *mf*. The final staff concludes with a double bar line, a measure count of '8', and a final measure with a measure count of '4'.

Tchaikovsky — Swan Lake Suite, Op. 20a

4

Contrabassi

4

p *ff*

ff

5

p

pizz.

arco

6

ff

Contrabassi

Musical score for Contrabassi, Tchaikovsky's Swan Lake Suite, Op. 20a, page 7. The score consists of ten staves of music in bass clef with a key signature of two sharps (D major). The music features various rhythmic patterns, including eighth and sixteenth notes, and rests. A dynamic marking *ff* appears in the second staff, and a measure number 15 is boxed in the fifth staff. The piece concludes with a fermata on the final note of the tenth staff.

№ 3 Danses des cygnes.

Contrabassi

Allegro moderato

5 pizz. *p*

p

1 3 (pizz.) *p*

3 arco *ff*

Contrabassi

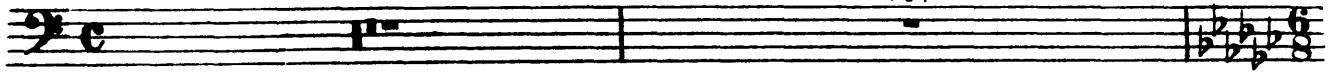
№ 4 Scène.

Andante

7

Arpa
Cadenza

ritenuto molto



Andante non troppo Violini I Solo

23

riten.

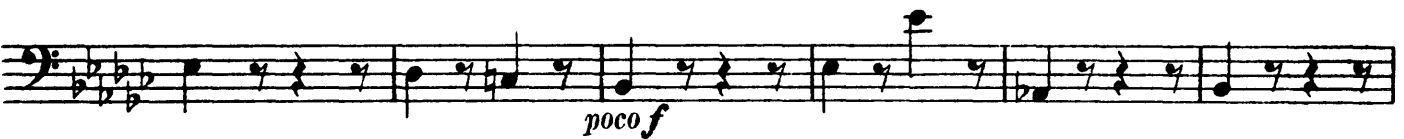
Più mosso

2

9

3

pizz.
C-bassi



№ 5 Danse hongroise. Czardas.

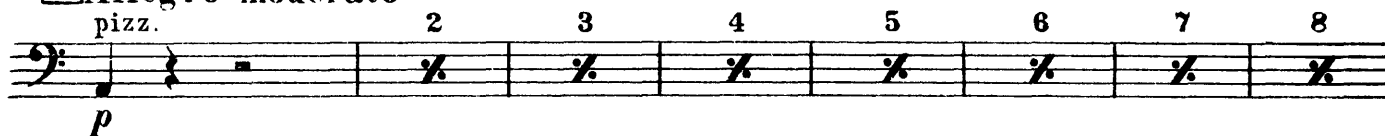
(Чардаш)

Contrabassi

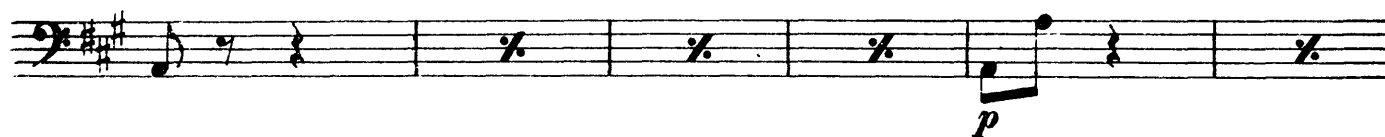
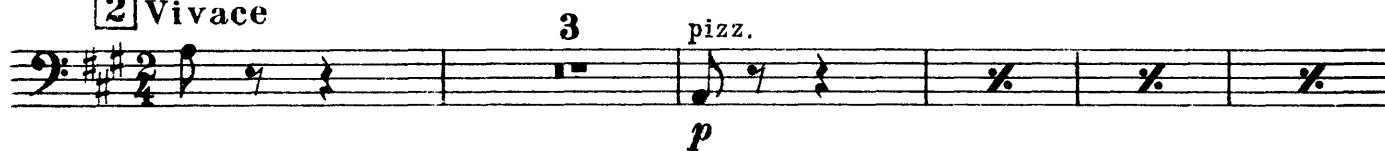
Moderato assai



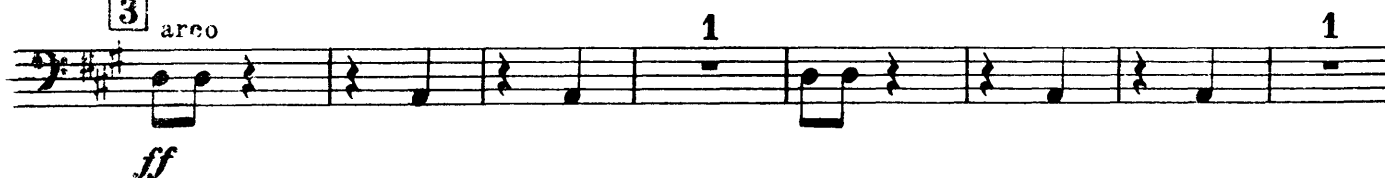
1 Allegro moderato



2 Vivace



3 arco



Contrabassi

pizz.
p

arco
ff *ff*

4 1-15 2 3

4 5 6 7 8

9 10 11 12 13

14 15

№ 6 Danse Espagnole

Contrabassi

Allegro non troppo (Tempo di bolero)

ff *p*

pizz. *mf*

1

Contrabassi

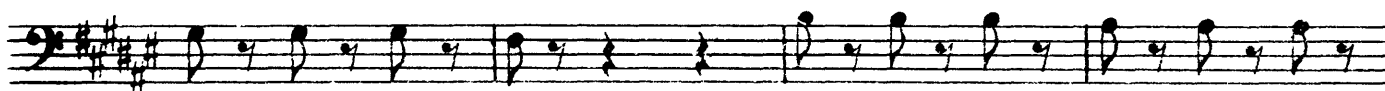
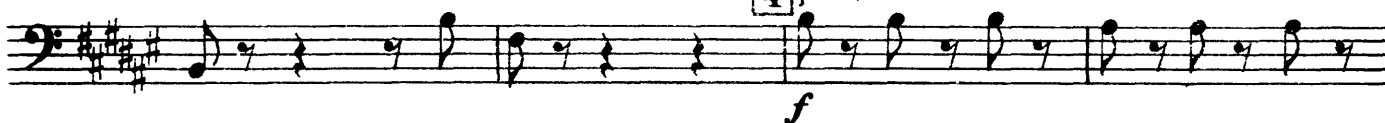
3 *Lo stesso tempo*

pizz.



4 *Più mosso*

pizz.



№ 7 Danse Napolitaine

Contrabassi

Allegro moderato

1

1 Andantino quasi moderato
pizz.

p

Molto piu mosso
pizz.

p

poco più f

2 Presto

arco

ff

p

Tchaikovsky — Swan Lake Suite, Op. 20a

16

Contrabassi

The musical score for Contrabassi is written in bass clef with a key signature of two sharps (D major). It consists of ten staves of music. The first staff begins with a rehearsal mark **3** and includes dynamic markings *p*, *cresc.*, and *ff*. The second staff continues the melodic line. The third staff features a more rhythmic pattern. The fourth staff starts with a double bar line and a *p* dynamic, followed by a *cresc.* marking. The fifth staff continues the melodic line. The sixth staff features a *ff* dynamic. The seventh staff continues the melodic line. The eighth staff features a *cresc.* marking. The ninth staff continues the melodic line. The tenth staff concludes the piece with a final chord.

№8 Mazurka

Contrabassi

Tempo di mazurka

ff

1

ff

pizz.

p

arco

ff

pizz.

p

1. *arco* **2.**

Tchaikovsky — Swan Lake Suite, Op. 20a

18

Contrabassi

3 arco
ff

4 pizz.
p

arco

pizz.
p

5
p

Contrabassi

6 arco

7 *f* *p* *cresc.*

8 *f* *ff*

9 *ff* *pizz.* *p* *arco* *ff* *pizz.* *p*

Detailed description: This page contains the musical score for the Contrabassi part, measures 6 through 9. The music is written in bass clef with a key signature of one sharp (F#). Measure 6 begins with the instruction 'arco' and features a series of six eighth notes with a slur. Measure 7 starts with a forte (*f*) dynamic and consists of a sequence of eighth notes with a slur, ending with a piano (*p*) dynamic and a 'cresc.' (crescendo) marking. Measure 8 begins with a piano (*p*) dynamic and continues with eighth notes, ending with a mezzo-forte (*mf*) dynamic and a 'cresc.' marking. Measure 9 starts with a forte (*f*) dynamic, followed by a rest, and then continues with eighth notes, ending with a fortissimo (*ff*) dynamic. The score continues with several more staves of music, including a section marked 'pizz.' (pizzicato) starting at a piano (*p*) dynamic, and another section marked 'arco' starting at a fortissimo (*ff*) dynamic, followed by a 'pizz.' section starting at a piano (*p*) dynamic.

Tchaikovsky — Swan Lake Suite, Op. 20a

20

Contrabassi

10 arco
ff

11
ff

12 Più mosso

Detailed description: This page contains the musical score for the Contrabassi part of the Swan Lake Suite, Op. 20a, page 20. The score is written in bass clef with a key signature of one sharp (F#). It consists of four systems of staves. The first system contains measures 10 and 11. Measure 10 is marked 'arco' and 'ff'. The second system contains measures 12, 13, and 14. Measure 12 is marked 'Più mosso'. The third system contains measures 15 and 16. The fourth system contains measures 17 and 18. The music features a variety of rhythmic values, including quarter notes, eighth notes, and sixteenth notes, with some measures containing rests.