

Trombone 1

STABAT MATER

KARL JENKINS

1. Cantus lacrimosus

With piety $\text{♩} = 64$

23

A



Sta-bat Ma ter do-lo-ro - sa jux-ta cru-cem la-cri-mo - sa,

28

12

B

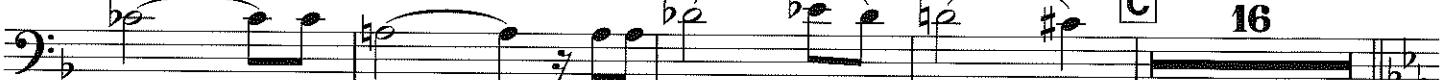


mp

44

16

C



p

64

D

18

E



f

ff

88

F

4



mf

98

G

20

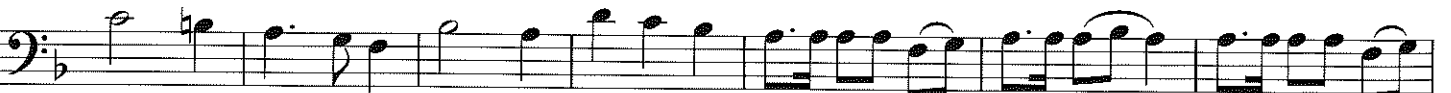


dim

p

mp legato cresc

125



poco f

132

8

H

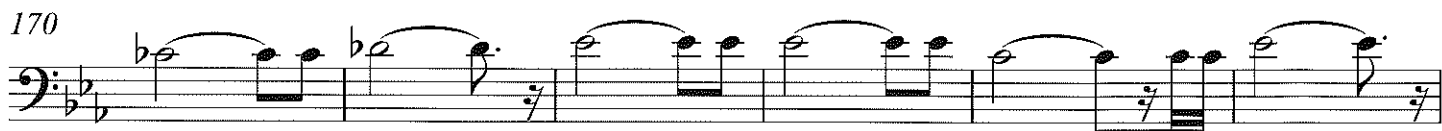
16

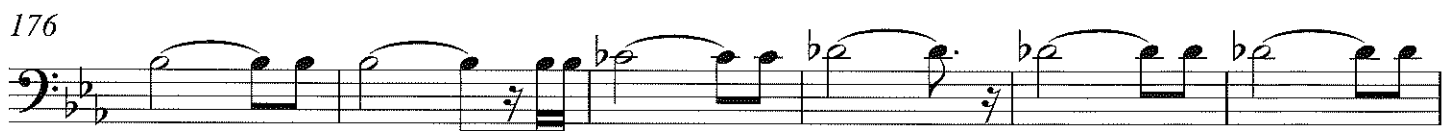


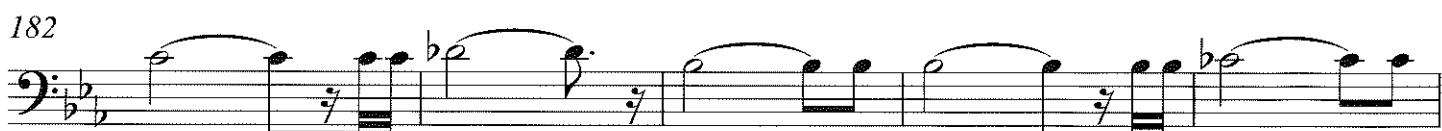
Trombone 1

160 
mp

165 

170 

176 

182 

187 
rall

2. Incantation

TACET

3. Vidit Jesum in tormentis

With torment $\text{♩} = 48$

5 pp 6 **A** 7 **B** 3 p *chord*

24 mf 1 mf

30 **C** 4 3

42 **D** mf *subito p*

48 f mf

54 4

63 **E** pp *poco f*

70 2 pp [3]

Trombone 1
4. Lament
TACET

5. Sancta Mater

Relentlessly ♩ = 70

8

9

23

33

46

59

65

73

81

Trombone 1

95 G

f

104 H

mp *mf*

118 I

f

126

mf sub, cresc

133

ff

138

6. Now my life is only weeping

Tearfully ♩ = 48

5 **A** 10

16 **B** C Ang 8 *pp*

29 **C**

35 **D** *p*

41 2 *mp* rit

7. And the Mother did weep

TACET

8. Virgo virginum

TACET

9. Are you lost out in darkness?

With a sense of desolation $\text{♩} = 54$

4 [A] 9 [B] C Solo

Is _____ your

This staff contains measures 1 through 14. It starts with a 4-measure rest, followed by a 9-measure rest, and then begins with a C Solo section.

15

3 1

sleep, _____ your si - lence, *mp*

gliss. *gliss.*

This staff contains measures 15 through 22. It features a 3-measure rest and a 1-measure rest, with glissando markings and a mezzo-piano (*mp*) dynamic.

23

[C] 8

p *mp*

gliss. *gliss.*

This staff contains measures 23 through 35. It includes a 4-measure rest, glissando markings, and dynamics ranging from piano (*p*) to mezzo-piano (*mp*).

36

[D] 1

This staff contains measures 36 through 42. It features a 4-measure rest and a 1-measure rest.

43

[E]

poco mf

This staff contains measures 43 through 48. It includes a mezzo-forte (*mf*) dynamic and a *poco* marking.

49

p

This staff contains measures 49 through 55. It ends with a piano (*p*) dynamic.

56

[F] 1 1

ppp

This staff contains measures 56 through 62. It features a 4-measure rest, a 2-measure rest, and a 4-measure rest, with a pianissimo (*ppp*) dynamic.

63

This staff contains measures 63 through 70.

Trombone 1

10. Ave verum

TACET

11. Fac, ut portem Christi mortem

TACET

12. Paradisi gloria

Andante $\text{♩} = 70$

8 **A** 6 **B** 6 **C** S1

Quan - do cor - pus mo - ri - e - tur,

22 8 **D** 4

fac, ut a - ni - mae do - ne - tur pa - ra - di - si glo - ri - a.

37

mp cresc poco a poco

41

(cresc)

44 **E**

f ff f

51 4

f

63 **F**

72 5 3

f

Trombone 1

83

1 3 1

90

3 G 1

96

1 1

102

2 1

109

H ♩ = ♩ (♩ = 140) 3 1

114

1 1

118

1 1

122

1 1

124

1 1

127

1 1